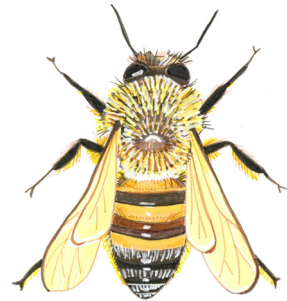


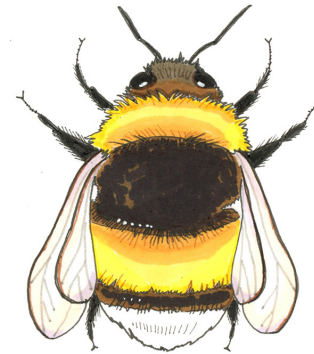
Lär dig åtta biarter i Sverige!



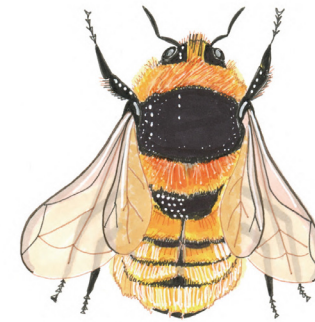
Citronbi
Hylaeus



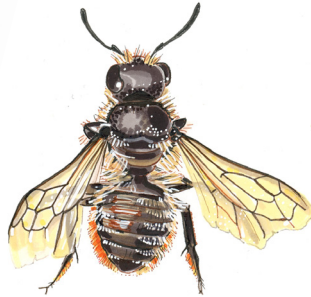
Honungsbi
Apis mellifera



Jordhumla
Bombus lucorum coll



Klöverhumla
Bombus distinguendus



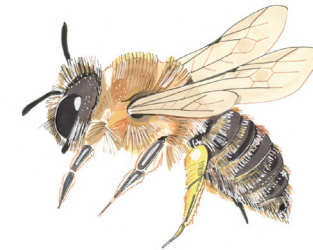
Rosentapetserarbi
Megachile centuncularis



Rödmurarbi
Osmia bicornis



Småsovarbi
Chelostoma campanularum



Vårsidenbi
Colletes cunicularius

